



# Southern California GI & Liver Centers

## Liver Fibroscan Instructions

**PATIENT NAME:** \_\_\_\_\_

**PROCEDURE DATE:** Pending approval from your insurance company

The date of the procedure is pending an approval (if necessary) from your insurance health plan. **This may take up to 10 days.** Following insurance authorization approval, you will receive a phone call from our office to schedule this procedure.

**LOCATION:**

**TELEPHONE:**

**CHECK IN TIME:** \_\_\_\_\_.

**WHAT TO BRING:**

Photo identification.

**CANCELLATION POLICY:**

If you need to cancel your appointment, **please call our office at 619-522-0399** at least 24 hours prior to your procedure. Failure to provide proper cancellation notice will result in \$100.00 (one-hundred dollars) cancellation fee.

**THE DAY OF YOUR PROCEDURE:**

**Do not eat or drink anything 2 hours before your procedure.** You can take your usual morning medications with a small amount of water. If you are diabetic, **DO NOT TAKE DIABETIC MEDICATIONS** until you return home after the procedure. Check your blood sugar at home on the morning of your procedure and tell the nurse when you get to your appointment.

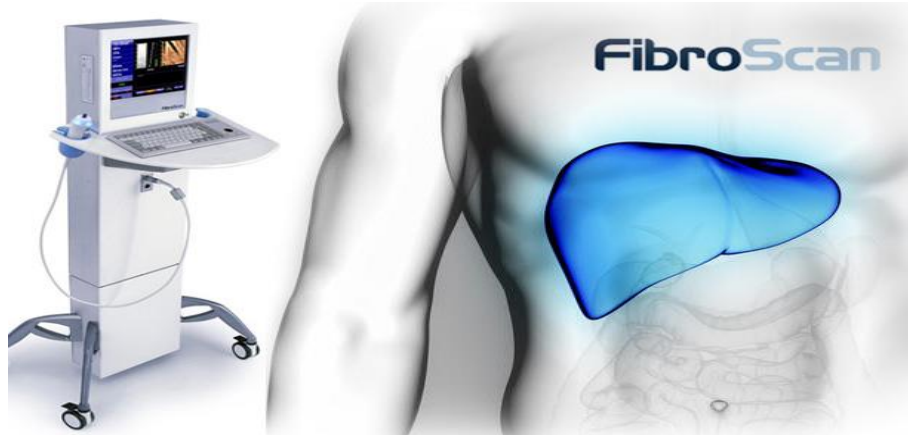
**DURING THE PROCEDURE:**

You may feel slight discomfort when the area of your abdomen over your liver is scanned. It is important that you lay still throughout the procedure. The scan is usually completed in approximately 10 minutes. If you are overweight or a transplant recipient, the procedure may take longer.

**AFTER THE PROCEDURE:**

The provider will interpret the result of the procedure for you. A copy of the results will become part of your permanent record at SCLC.

**WHAT IS A FIBROSCAN?** An examination with Fibroscan, which uses a technology called vibration controlled transient elastography, is a non-invasive test used to assess liver stiffness. Fibroscan is indicated for noninvasive measurement of shear wave speed and equivalent stiffness in the liver. The shear speed or stiffness may be used as an aid to clinically manage your liver disease. The result is immediate and shows the evolution of the health of your liver.



**IS IT PAINFUL?** No. The Fibroscan examination is painless, quick, and easy. During the exam, you may feel a slight vibration on the skin at the tip of the probe.

#### IMPORTANT REMINDERS:

All **LIVER FIBROSCAN** procedures will include:

- A physician fee
- A physician/provider interpretation fee

**Not all insurance policies are the same.** Certain policies are limited, reduced, and in some instances, provide no benefits for routine, preventative, or screening procedures. We strongly encourage you to contact your insurance company for specific information on what your plan covers.

**\*\*Any charges not covered by your individual or group insurance plan will be the financial responsibility of the patient.\*\***